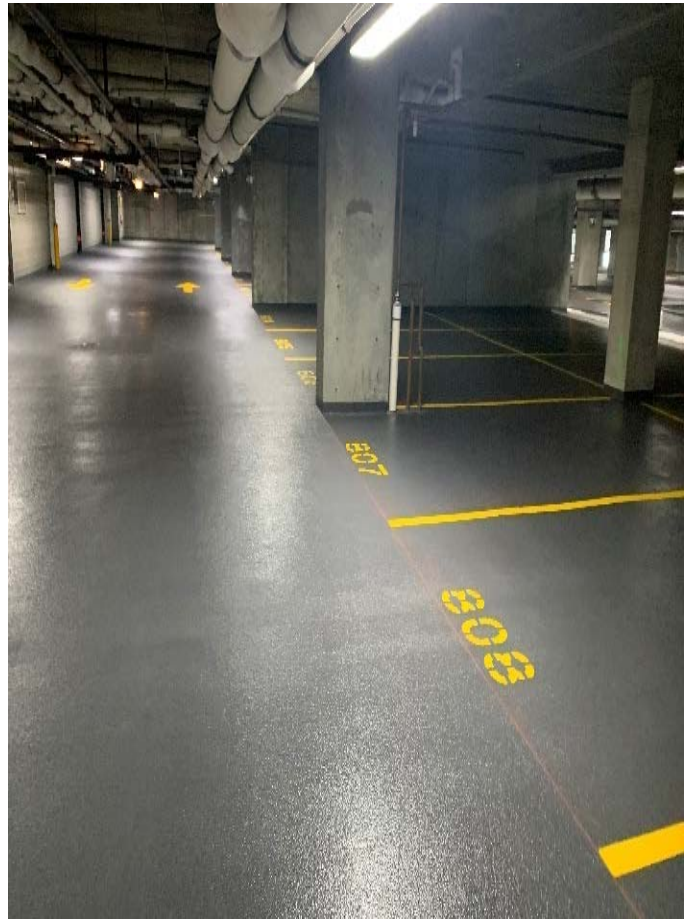


OPTIMA OLD ORCHARD GARAGE MAINTENANCE REPAIRS SKOKIE, IL



Before



After

Project: Optima Old Orchard Parking Garage Maintenance Repairs

Owner Reference: DCH Management, Inc. c/o Optima Old Orchard

Scope:

- Floor repair: 5,035 SF
- Shotcrete: 2,206 SF
- New Traffic-Bearing Waterproofing: 198,800 SF
- New Expansion Joints: 1,030 LF
- Rout and Seal Cracks: 3,800 LF
- Galvanic Anodes: 1,683

Site Conditions:

- Multiple phases. 75% of garage remained open during the project.